



£1,300 Monthly

Berkeley square, 321 Ordsall Ln, Salford M5 3Rj

Flat | 1 Bedroom | 1 Bathroom

+44 (0)161 383 0303

 **ROYA**
INTERNATIONAL
ESTATE AGENTS

www.royaestates.co.uk



Step Inside

Key Features

- One-bedroom, one-bathroom flat
- Brand new development
- Furnished, move-in ready
- High-spec kitchen
- Onsite gym access
- Minutes from city centre
- Secure entry systems
- Viewing recommended
- One Gated Car Parking space available in addition of 100 GBP

Property Description

Welcome to Berkeley Square, one of Manchester's most sought-after new residential communities. This beautifully finished one-bedroom furnished apartment offers a blend of contemporary style, comfort, and practicality, perfect for anyone looking to live close to the heart of the city.

The apartment features a bright and spacious open-plan living and dining area, designed to feel warm and welcoming. Large windows flood the space with natural light, and the tasteful furniture and fitted blinds create a clean, modern, move-in-ready environment.

The kitchen is fitted to a high specification, complete with integrated appliances, sleek cabinetry, and plenty of workspace, ideal for daily cooking or hosting guests. The bedroom is generously sized and designed for comfort, offering stylish furnishings and excellent storage options. The bathroom showcases a contemporary look with premium tiling, quality fixtures, and a refreshing, spa-inspired finish.

Residents at Berkeley Square have access to a range of outstanding amenities, including landscaped communal gardens, a private on-site gym, and secure entry systems for added reassurance. The development reflects a strong focus on quality, convenience, and modern living.

Located in Salford, just minutes from Manchester's city centre, the area provides easy access to MediaCityUK, Spinningfields, and a wide selection of shops, restaurants, and leisure facilities. Whether you're commuting, exploring the city, or unwinding at home, this location offers the perfect balance of convenience and calm.

This furnished one-bedroom apartment at Berkeley Square delivers a superb combination of style, comfort, and location - a fantastic place to call home.

Main Particulars

Welcome to Berkeley Square, one of Manchester's most sought-after new residential communities. This beautifully finished one-bedroom furnished apartment offers a blend of contemporary style, comfort, and practicality, perfect for anyone looking to live close to the heart of the city.

The apartment features a bright and spacious open-plan living and dining area, designed to feel warm and welcoming. Large windows flood the space with natural light, and the tasteful furniture and fitted blinds create a clean, modern, move-in-ready environment.

The kitchen is fitted to a high specification, complete with integrated appliances, sleek cabinetry, and plenty of workspace, ideal for daily cooking or hosting guests. The bedroom is generously sized and designed for comfort, offering stylish furnishings and excellent storage options. The bathroom showcases a contemporary look with premium tiling, quality fixtures, and a refreshing, spa-inspired finish.

Residents at Berkeley Square have access to a range of outstanding amenities, including landscaped communal gardens, a private on-site gym, and secure entry systems for added reassurance. The development reflects a strong focus on quality, convenience, and modern living.

Located in Salford, just minutes from Manchester's city centre, the area provides easy access to MediaCityUK, Spinningfields, and a wide selection of shops, restaurants, and leisure facilities. Whether you're commuting, exploring the city, or unwinding at home, this location offers the perfect balance of convenience and calm.

This furnished one-bedroom apartment at Berkeley Square delivers a superb combination of style, comfort, and location - a fantastic place to call home.

Living Room



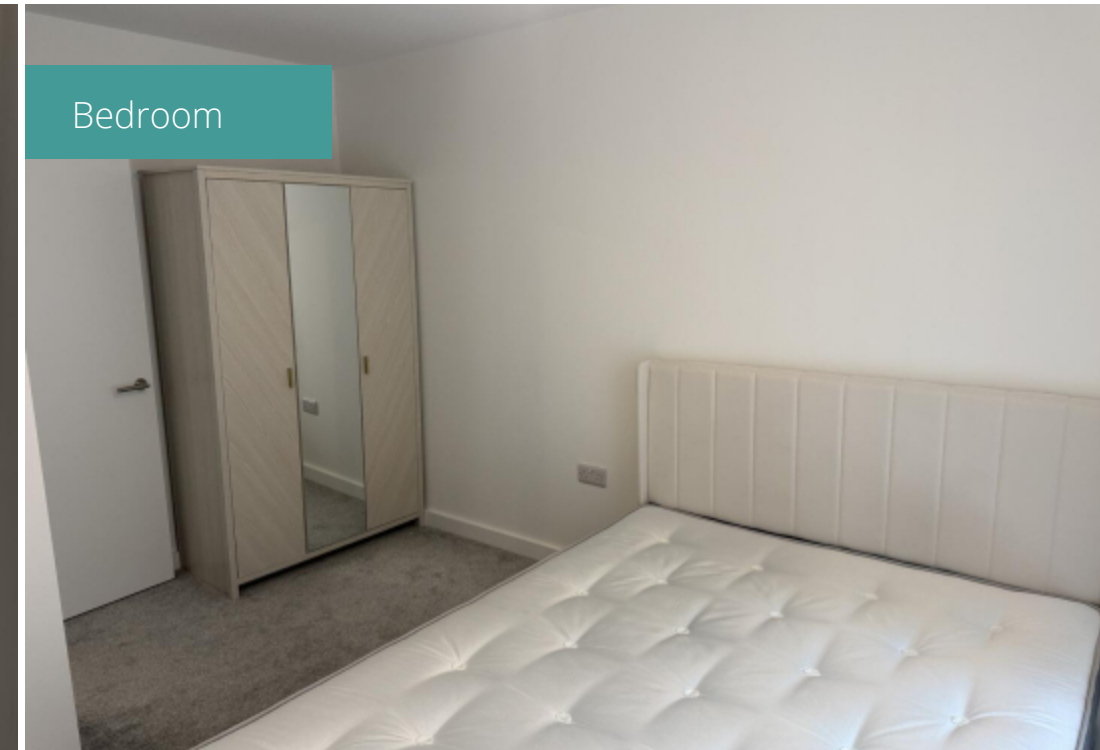
Kitchen



Bedroom



Bedroom



Telephone: +44 (0)161 383 0303



www.royaestates.co.uk