



£900,000

Lombard Wharf, Lombard Road, Battersea, London SW11

Flat | 2 Bedrooms | 2 Bathrooms

+44 (0)161 383 0303



www.royaestates.co.uk



Step Inside

Property Description

Roya International is thrilled to present this excellent 4th floor apartment at Lombard Wharf. It offers 2 double bedrooms and a main bedroom with an en-suite bathroom, with the main featuring built-in storage, a spacious open-plan reception with a kitchen, and amazing views across the River Thames and the city from the large private balcony.

Measuring at 1,127.00 sq ft, this apartment offers an abundance of natural light, an open-plan kitchen/reception, and access to the balcony from both the living room and master bedroom.

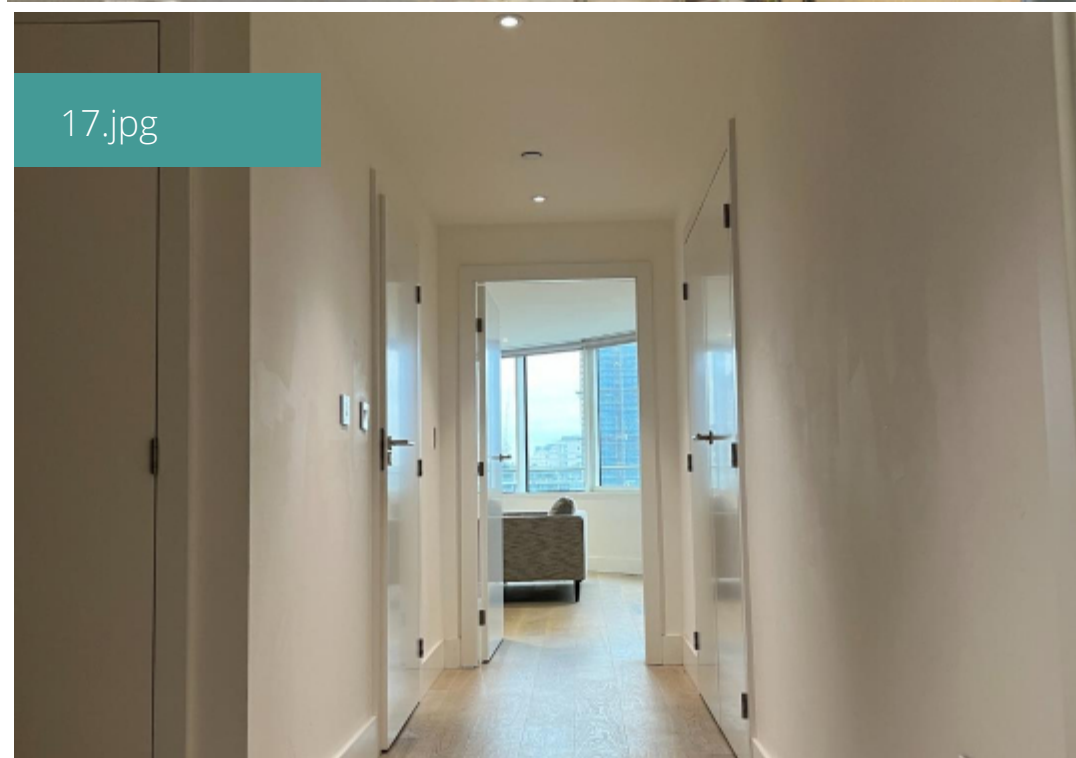
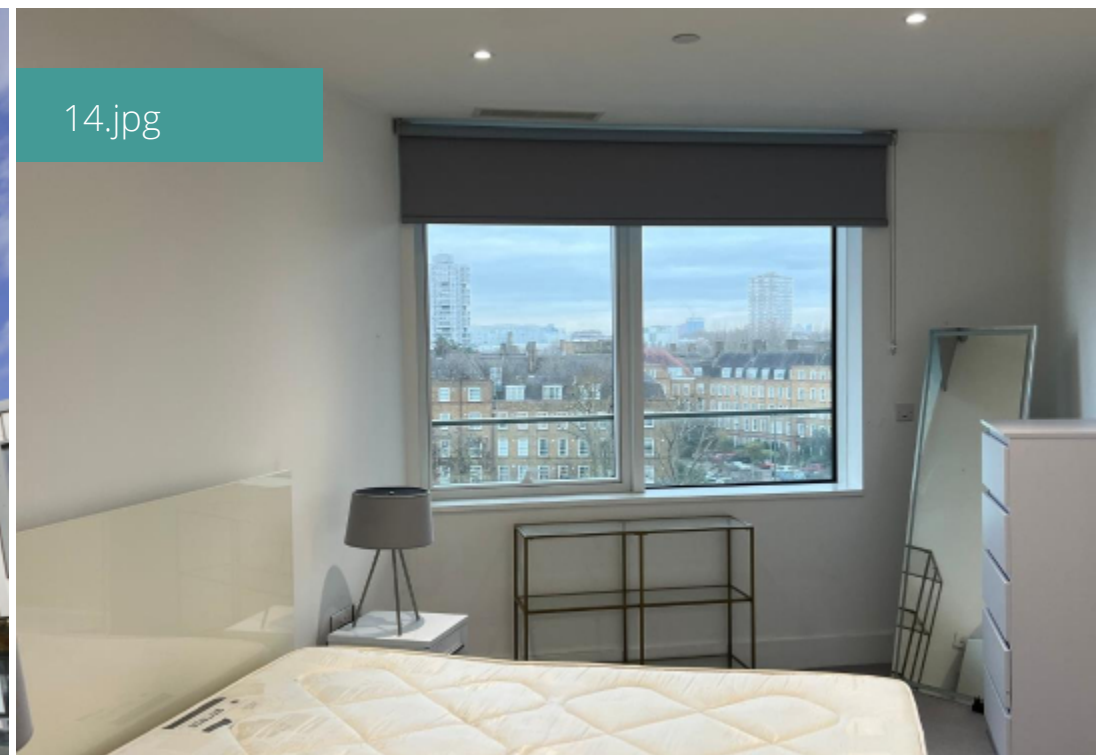
This stunning, contemporary two-bedroom apartment is set within a prestigious riverside development, offering bright and spacious living. The property boasts a generous open-plan reception and kitchen area with integrated appliances, two double bedrooms, and two bathrooms. Residents benefit from a 24-hour concierge service, an on-site gym, and spectacular views of the River Thames.

Main Particulars

Roya International is thrilled to present this excellent 4th floor apartment at Lombard Wharf. It offers 2 double bedrooms and a main bedroom with an en-suite bathroom, with the main featuring built-in storage, a spacious open-plan reception with a kitchen, and amazing views across the River Thames and the city from the large private balcony.

Measuring at 1,127.00 sq ft, this apartment offers an abundance of natural light, an open-plan kitchen/reception, and access to the balcony from both the living room and master bedroom.

This stunning, contemporary two-bedroom apartment is set within a prestigious riverside development, offering bright and spacious living. The property boasts a generous open-plan reception and kitchen area with integrated appliances, two double bedrooms, and two bathrooms. Residents benefit from a 24-hour concierge service, an on-site gym, and spectacular views of the River Thames.



LOMBARD WHARF, SW11

Approx. gross internal area
1127 Sq Ft. / 104.7 Sq M.



This floorplan is for illustrative purposes only and the location of doors, windows and other items are approximate.

Telephone: +44 (0)161 383 0303



www.royaestates.co.uk